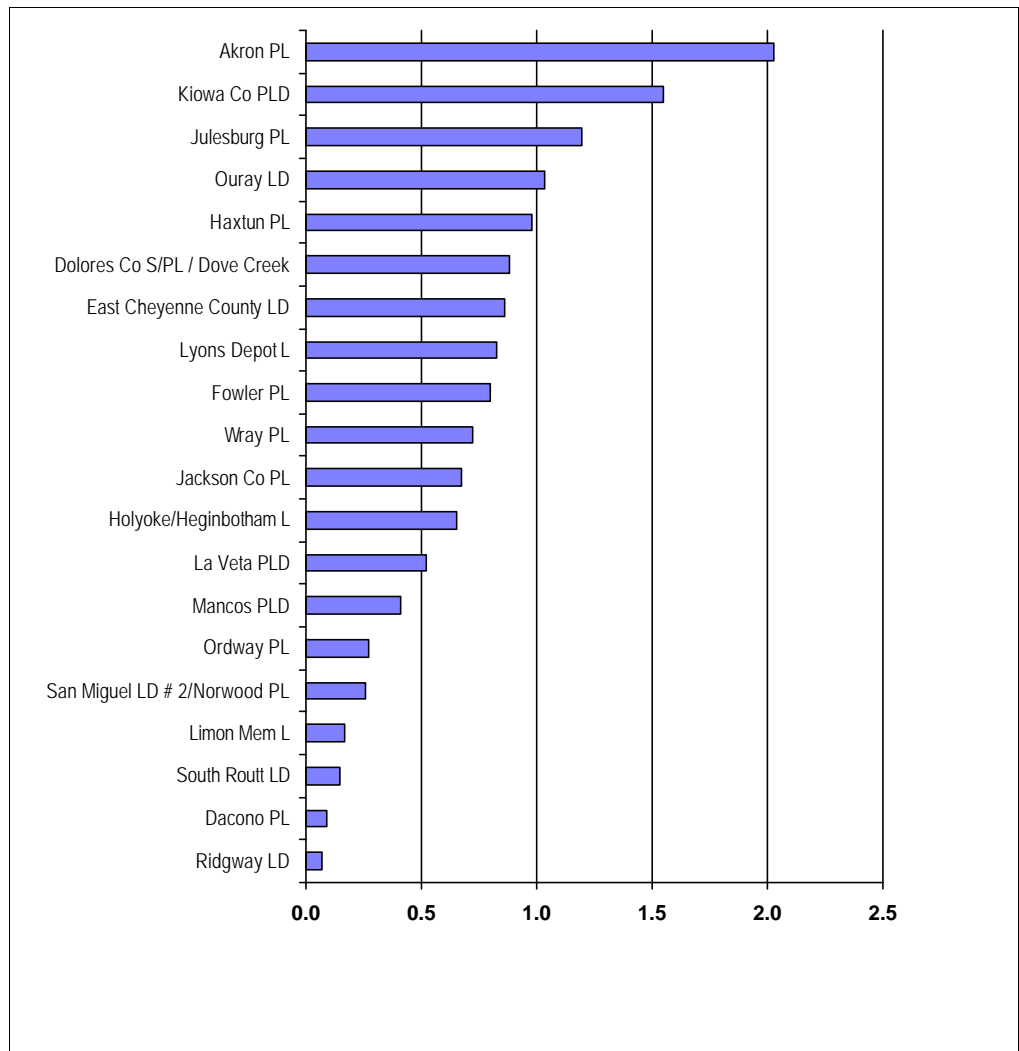


# Reference Questions per Capita

Libraries Serving 1,000 - 2,499

This statistic relates the number of information contacts with a staff member to the number of persons in the legal service area population.



Library	LSA Population	Reference Questions	Questions per Capita
Akron PL	1,773	3,590	2.0
Dacono PL	2,366	217	0.1
Dolores Co S/PL / Dove Creek	1,822	1,610	0.9
East Cheyenne County LD	1,808	1,560	0.9
Fowler PL	1,545	1,230	0.8
Haxtun PL	1,044	1,025	1.0
Holyoke/Heginbotham L	2,145	1,393	0.6
Jackson Co PL	1,788	1,209	0.7
Julesburg PL	1,303	1,560	1.2
Kiowa Co PLD	1,779	2,750	1.5
La Veta PLD	1,338	700	0.5
Limon Mem L	2,315	386	0.2
Lyons Depot L	1,516	1,248	0.8
Mancos PLD	2,423	988	0.4
Ordway PL	1,169	315	0.3
Ouray LD	1,257	1,300	1.0
Ridgway LD	1,537	104	0.1
San Miguel LD # 2/Norwood PL	1,959	504	0.3
South Routt LD	2,323	332	0.1
Wray PL	2,158	1,560	0.7